

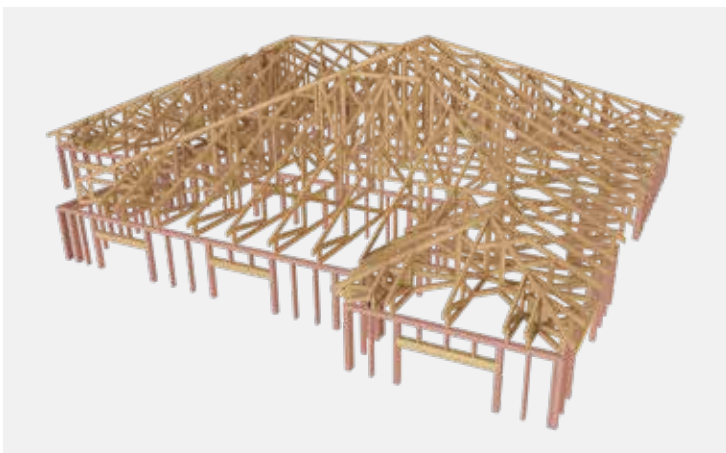


futurebuild[®]
residential design service

Architects & Developers

RDS TRUSS & LINTEL LAYOUTS

YOUR DESIGN AND CONSENT PROCESS STREAMLINED.



The Futurebuild LVL Residential Design Service (RDS) Truss & Lintel Layouts service combines years of experience and the knowledge of Chartered Professional Engineers to deliver dependable results, saving you time and effort.

Key features and advantages of using the service include:

- **Comprehensive Design Service:** RDS solutions feature compatible components that integrate seamlessly into a single, cohesive system
- **Easy Submission Process:** Submit requests via the RDS Truss & Lintel Layouts portal for quick and simple service access. Includes chat function for contact with engineer
- **Dedicated Point of Contact:** Eliminate the hassle of managing multiple parties handling various revisions. Backed up by support from your Specification Representative

- **Fast Turnaround:** Get your designs completed quickly and efficiently
- **Supplied with PSIs:** including all supporting documents required for consenting process with your Territorial Authority
- **Includes Midfloors & Roofs Design for Futurebuild LVL kitset supply:** as applicable

DESIGN - PLAN - DELIVER

RESIDENTIAL DESIGN SERVICE

Enquire Today

Contact:

Your Regional Specification Representative

Email:

specification@futurebuild.co.nz

Call:

0800 585 244

RDS TRUSS & LINTEL LAYOUTS

WHAT WE NEED AND WHAT YOU GET IN THREE SIMPLE STEPS

1. Submit your Truss & Lintel Layouts request

Your Specification Representative will:

- Set you up with your own account and login details for the portal that will enable you to submit Truss & Lintel Layout requests
- Help you with your initial submission, taking you through step by step
- Provide any needed support throughout the job process

For our design team to provide your Truss and Lintel layout we will need:

- Dimensioned Consent Ready Plans in PDF Format including:
 - Floor plan and elevations showing all critical dimensions
 - Roof angle or pitch
 - Roof plane direction
 - Roof overhang
 - Any other details which may affect the design, such as chimney, skylight windows etc
 - Window opening size and location
 - Floor joist depth if also requesting midfloor design for Futurebuild LVL kitset supply

- Option to also attach any applicable engineering plans and documents
- Quantification and Design (as applicable)

Site details including:

- Site Name and Location
- Relevant Territorial Authority
- Building Type eg Apartment, House, Terraced House
- Wind, snow and corrosion zones
- Builder Information (helpful but optional)
- Required design - Truss & Lintel, Rafters, Midfloor, Sub-floor

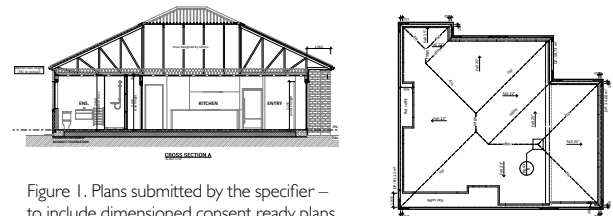


Figure 1. Plans submitted by the specifier – to include dimensioned consent ready plans
Design: Barrett Homes

2. Job progress tracking

- For your initial and future job submissions, you will be able to see your jobs and their progress on the dashboard
- If we have any queries or suggestions, we will be in contact with you
- Support throughout the process from your dedicated Specification Representative
- Two-way chat function for direct communication with design engineer

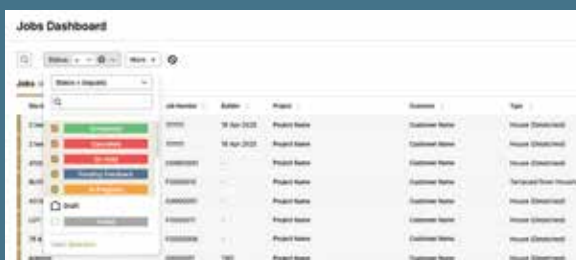


Figure 2. Portal Environment

3. Your Truss & Lintel Layouts are ready in the portal, notified by email

You will receive from us a package including:

- Buildable Consent Layout/s
- Signed PSIs ready for your consent application to the relevant Territorial Authority
- Lintel and/or Beam Summary
- Lintel Reaction and Fixing Summary
- Lintel and/or Beam Design Calculations
- Lateral and/or Gable End Web Bracing
- Lintel and/or Truss Fixing Details

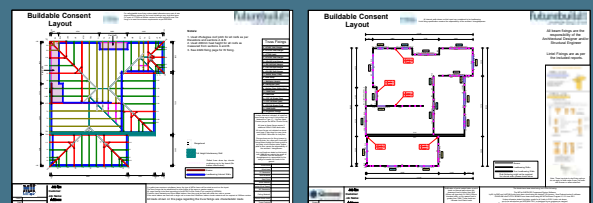


Figure 3. Plans produced and supplied back to the specifier

DESIGN - PLAN - DELIVER

ENQUIRE TODAY

RESIDENTIAL
DESIGN SERVICE

Contact: Your Regional Specification Representative
Email: specification@futurebuild.co.nz
Call: 0800 585 244

Note: This service is currently for residential projects only

www.futurebuild.co.nz

FUTUREBUILD LVL RDS T&L V1.04.0825