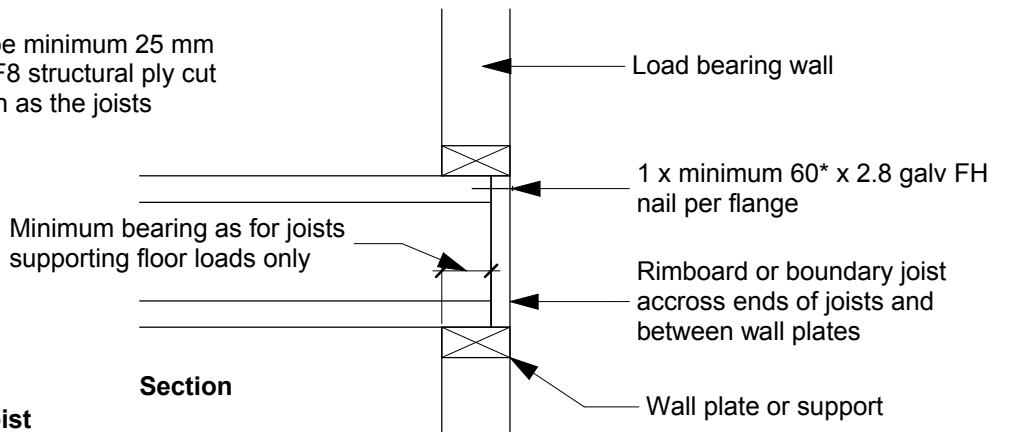


Splice joint 'rimboard' between joists to block or ply piece

'Rimboard' may be minimum 25 mm H3 CCA treated F8 structural ply cut to the same depth as the joists

hyJOIST must be installed plumb (maximum 1mm per 300mm joist depth)



Section

*nails should be of sufficient length to penetrate the flanges of joist at least 30mm

Detail F17
End restraint - using 'rimboard' or boundary joist
 Scale: NTS
 May 2007

Futurebuild hyJOIST Construction Details
 Construction details "Copyright" to Carter Holt Harvey Limited
 Supplied for use by building design professionals in New Zealand